

## New Faculty Orientation



## UMass Chan Medical School



## Welcome to UMass Chan Medical School





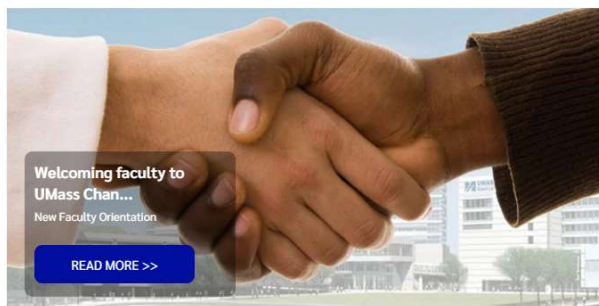
## New Faculty Orientation



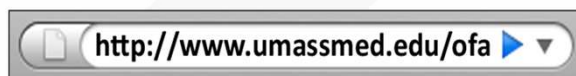
## Overview of UMass Chan Faculty

5

For more information, visit the Office of Faculty Affairs website



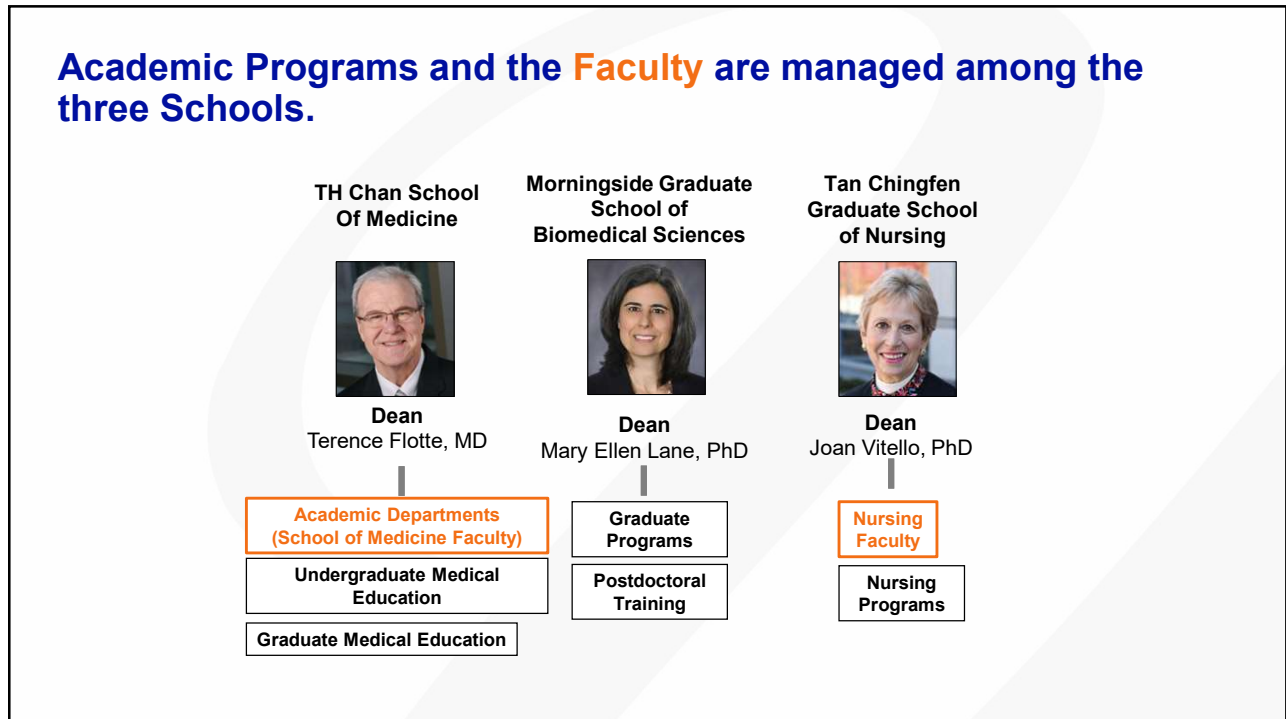
- OFA Quicklinks**
- Annual Performance Review
  - Academic Personnel Policy (APP)
  - CVs and NIH Biosketches
  - Individual Opportunity Plan
  - Promotion Process
  - Recruitment & Hiring Process
  - Transition Through Retirement
  - Part Time Guidelines
  - Preparing for Promotion



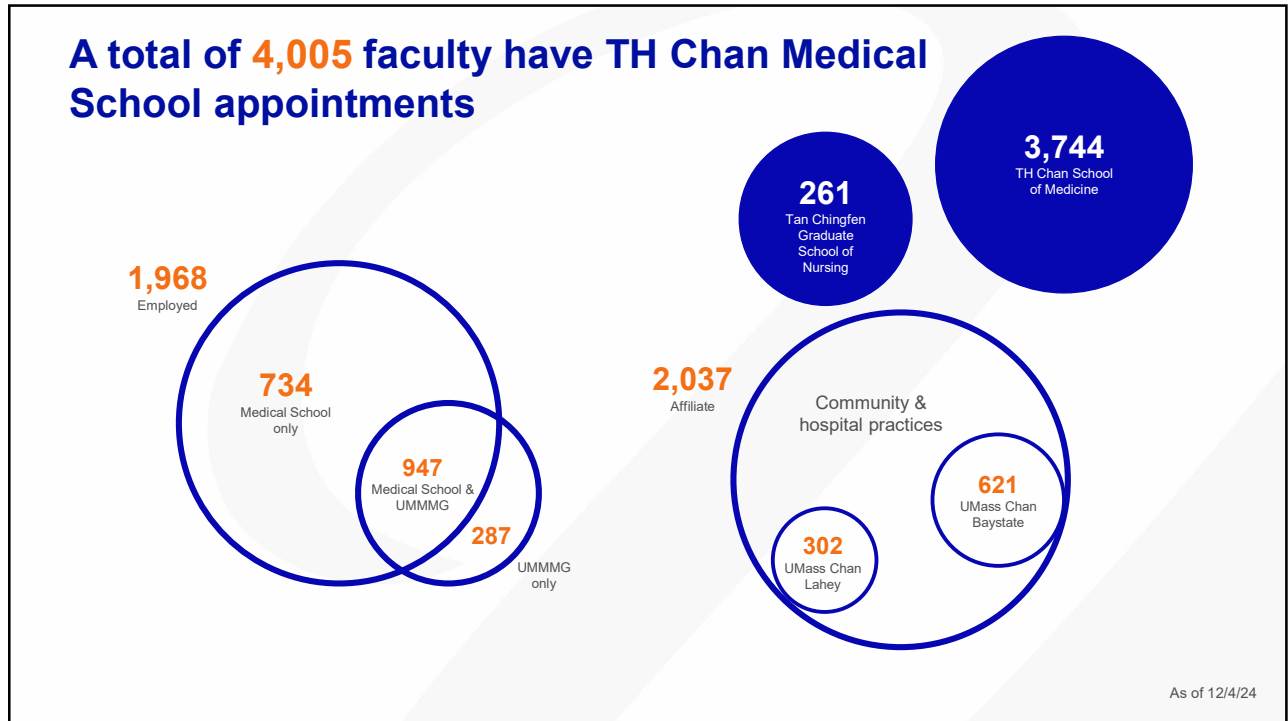
6



7




8



## UMass Chan Regional Campuses


### UMass Chan- Baystate



**Andrew Artenstein, MD**  
**Regional Exec. Dean**  
**UMass Chan-Baystate**

- **621 affiliate faculty**
- **12 academic departments**

### UMass Chan- Lahey

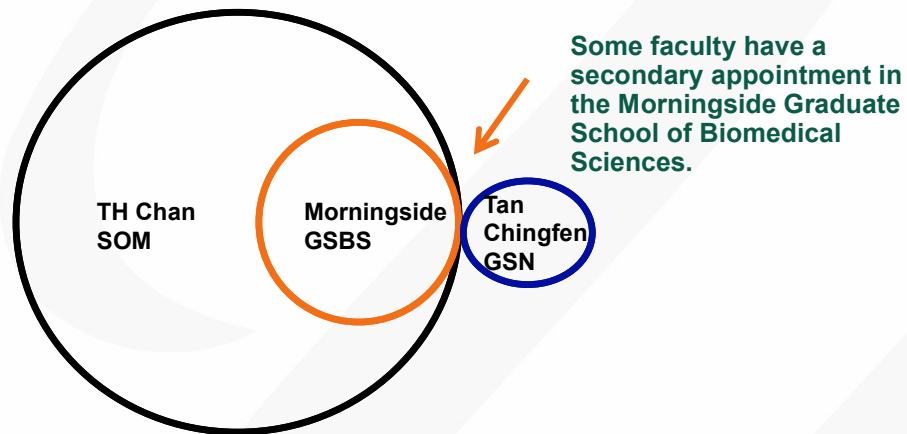


**Anne Mosenthal, MD, FACS**  
**Regional Exec. Dean**  
**UMass Chan-Lahey**

- **302 affiliate faculty\***
- **8 academic departments\***

\*Faculty appointments are ongoing  
\*Additional departments may be established  
\*As of 12/4/24

## All faculty have a primary appointment in either the TH Chan School of Medicine or Tan Chingfen Graduate School of Nursing



11

## Tan Chingfen Graduate School of Nursing prepares practice-focused (DNP) and research-focused (PhD) nursing leaders



- 266 students (as of 1/8/25)
- 268 faculty (33 core faculty)\*

### Educational Programs:

- Graduate Entry Pathway (GEP) - Prelicensure
- Master of Science (MS) Program - Nursing & Interprofessional Leadership
- Post-Graduate Certificates (PGC)
- Doctor of Nursing Practice (DNP) Program
- Doctor of Philosophy in Nursing (PhD)

**Nursing School Rank:** #2 in Massachusetts  
(*Nursing Schools Almanac*) #4 in New England  
#23 in USA (public schools)  
#41 in USA (all schools)

\*As of 1/2/25

12

## The Morningside Graduate School of Biomedical Sciences educates graduate students in research



PhD in Biomedical Sciences

- 11 program concentrations

Masters of Clinical Science Investigation

Preparatory programs

363 PhD students\*

82 MD/PhD students\*

296 postdoctoral scholars\*

**379 faculty\*\***

\*as of 12/12/24  
\*\*As of 1/2/25

13

## Nobel prize in medicine or physiology



**Craig C. Mello, PhD**  
2006 | *RNAi*



**Victor R. Ambros, PhD**  
2024 | *Micro RNA*

14

## UMass Chan faculty are world renowned

- 2** **Nobel Prize for Physiology or Medicine**  
Craig Mello  
Victor Ambros
- 1** **Albert Lasker Award for Basic Medical Research**  
Victor Ambros
- 1** **Breakthrough Prize in Life Sciences**  
Victor Ambros
- 10** **National Academy of Science Members**  
Victor Ambros  
Roger Davis  
Katherine Fitzgerald  
Nikolaus Grigorieff  
Craig Mello  
Raul Padron  
Job Dekker  
Phillip Zamore  
Celia Schiffer
- 5** **National Academy of Medicine Members**  
Robert H. Brown  
Job Dekker  
Kate Fitzgerald  
Phillip Zamore  
Roger Davis  
John E. Ware
- 6** **American Academy of Arts & Sciences Members**  
Victor Ambros  
Roger Davis  
Craig Mello  
Thoru Pederson  
Katherine Fitzgerald  
Phillip Zamore  
Allan Jacobson
- 4** **Howard Hughes Medical Institute Investigators**  
Job Dekker  
Nikolaus Grigorieff  
Phillip Zamore



15

## #2 in NIH Funding to New England Medical Schools

Overall Ranking	Institution	NIH Funding Total
4	Yale University	\$571 M
<b>37</b>	<b>UMass Chan Medical School</b>	<b>\$177 M</b>
42	Harvard Medical School	\$165 M
45	Boston University	\$148 M
64	Dartmouth College	\$71 M
65	Brown University	\$69 M
70	UConn School of Medicine/Dentistry	\$60 M
75	Tufts University School of Medicine	\$52 M
80	University of Vermont	\$45 M

Source: Blue Ridge Institute for Medical Research, 2023 funding (published 2024)

16

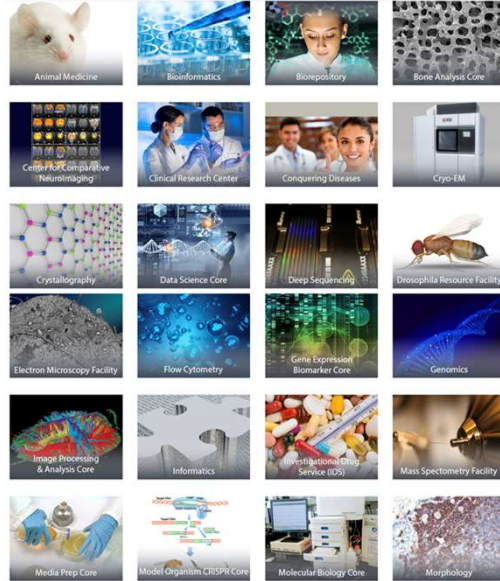


Mary Ahn, MD

## How We Excel – Core Facilities

### UMass Research Core Facilities

- **~50 scientific cores** available to all internal investigators for a fee-for-service charge
- Offer a wide range of services to the research community including cutting edge technologies, high-end instrumentation and technical support for basic, translational and clinical research
- Core Directors are leaders in their fields, offer consultation on projects, and are collaborative partners



17

## Your OFA Team



**Mary Ahn, MD**  
Vice Provost for Faculty Affairs



**Emily Green, PhD, MA**  
Associate Vice Provost for Faculty Development



**Jennifer Reidy, MD, MS, FAAHPM**  
Director, Junior Faculty Development Program  
Associate Professor of Family Medicine & Community Health and Medicine



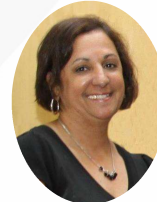
**Pranoti Mandrekar, PhD, FAASLD**  
Co-Director, Junior Faculty Development Program  
Professor of Medicine



**Janice Robert**  
Senior Academic Personnel Specialist



**Carrie Wambach**  
Academic Personnel Specialist



**Margie Rodriguez**  
Executive Assistant to VPFA



**Eileen O'Brien, MA, CAGS, LSW**  
Academic Administrative Manager III

18

## Professional and Leadership Development Across the Academic Career Lifespan



19

**We want to connect you with programs & resources to help meet your professional goals**



20

## OFA programming includes:

- 1 New Faculty Orientation**

Offered 3x per year  
Opportunity to hear from leadership  
Breakout rooms with key support offices
- 2 Junior Faculty Development Program**

Weekly sessions for 9 months  
Various topics on education, scholarship & leadership  
Scholarly mentored project
- 3 Peers for Promotion**

Designed for Assistant Professors  
Focus on basic file- CV, narrative statement, teaching evals
- 4 Summer Intensive for Presentation Skills**

3-day in-person workshop  
Focus on academic presentation skills

21

## OFA programming includes:

- Monthly virtual sessions  
Focus is topics on which faculty are evaluated  
(*educational effectiveness, scholarship, & academic impact*)

**5 Advance**
- \*NEW\*** 3-Session virtual program  
Focused on academic advancement

**6 Academic Faculty Success**
- Annual 1-day leadership development event  
Women faculty and their mentors

**7 EMPOWER Summit**
- In-person event with supporting offices  
1x per year in the fall

**8 Faculty Resource Fair**
- Year-long vertical leadership development program




**9 Vice-Chair Incubator Program**

22

## We want to communicate with you!

### Forwarding your @umassmed.edu emails

HOW TO: Forward UMass Chan Medical School emails to a different email address

1. Go to Outlook on the web (you cannot do this using the Outlook app) <https://outlook.live.com/owa/> and sign in using your UMass Chan Medical School email address (@umassmed.edu).  
Forgot your UMass username or password? Contact the Help Desk: (508) 856-8643 or [umasschanhelpdesk@umassmed.edu](mailto:umasschanhelpdesk@umassmed.edu)
2. Once in your email account, click on the Settings gear located in the top right corner of the screen.  

3. Click "View all Outlook settings" at the bottom of the menu.  

4. Under Mail settings, choose "Forwarding"  


### Changing your preferred email

HOW TO: Change how UMass Chan Medical School communicates with you

1. Check your faculty profile: <https://profiles.umassmed.edu/search/>  

2. Check the email address listed on your profile. This email is the one UMass Chan uses to send out important information, opportunities, and resources. If this email address is not one that you check regularly, request a change.  


<https://www.umassmed.edu/ofa/about/newswire/>



## Annual New Faculty Reception Fall 2025 Check your emails!

- ✓ Meet the Deans, Department Chairs and other Senior Leadership
- ✓ Enjoy an IN PERSON venue for networking amongst other faculty
- ✓ Hors d'oeuvres and Drinks will be served

Mary Ahn, MD

## Any questions?

Office of Faculty Affairs (OFA):  
Faculty.Affairs@umassmed.edu  
508-856-3244

Visit our website  
[www.umassmed.edu/ofa](http://www.umassmed.edu/ofa)

