

## Installing ECHO Personal Capture (EPAC) for Windows

This tutorial will walk you through the installation of ECHO Personal Capture on your computer and selecting the location on your local drive for your recordings.

The first step is to check that your system meets the minimum requirements to run this application. Click to view the [Recommended Hardware and Software for Windows](#).

### Installation of Software

Note: You must be an administrator on your computer in order for you to install ECHO Personal Capture.

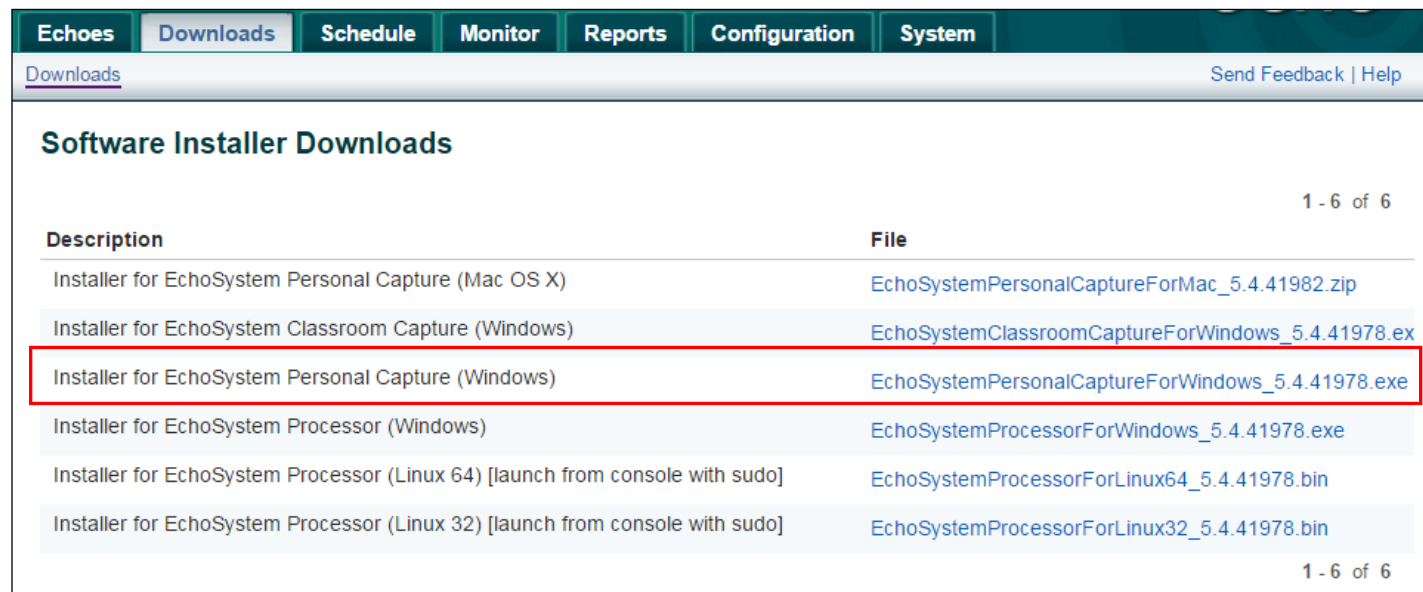
To install Personal Capture software on your system, first login to the ECHO Server System (ESS). The login page is <https://echo.umassmed.edu:8443/ess/login.jsp>.

Your credentials are your UMass Medical School account.

Once logged in, click on the **Downloads tab** at the top of the screen:



Click on the link to the **Installer for EchoSystem Personal Capture (Windows)**.

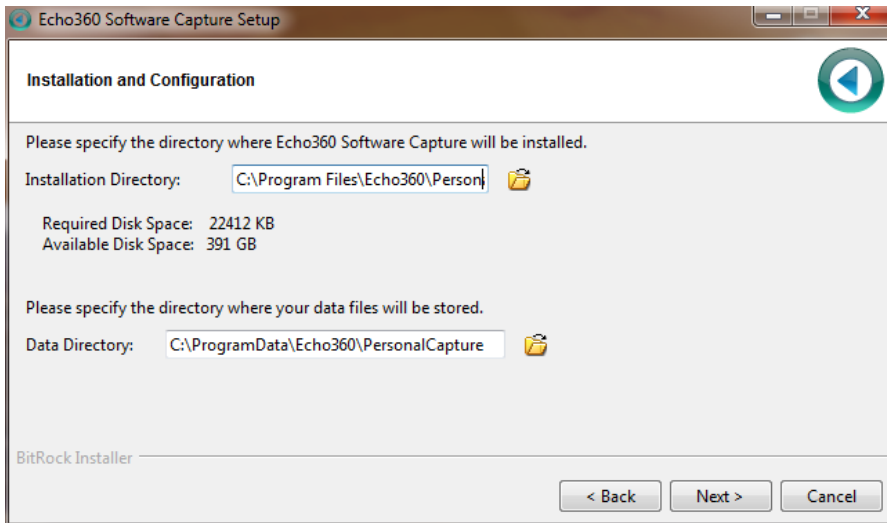


Description	File
Installer for EchoSystem Personal Capture (Mac OS X)	EchoSystemPersonalCaptureForMac_5.4.41982.zip
Installer for EchoSystem Classroom Capture (Windows)	EchoSystemClassroomCaptureForWindows_5.4.41978.ex
Installer for EchoSystem Personal Capture (Windows)	EchoSystemPersonalCaptureForWindows_5.4.41978.exe
Installer for EchoSystem Processor (Windows)	EchoSystemProcessorForWindows_5.4.41978.exe
Installer for EchoSystem Processor (Linux 64) [launch from console with sudo]	EchoSystemProcessorForLinux64_5.4.41978.bin
Installer for EchoSystem Processor (Linux 32) [launch from console with sudo]	EchoSystemProcessorForLinux32_5.4.41978.bin

1. Locate the downloaded installer executable file and double-click it to start the installation process.

2. Follow the installation wizard.
3. Confirm or change the locations for installation and for capture files, as shown in the below figure, then click **Next**.

Note: The Personal Capture installation and data directories must be on the local drive; they cannot be located on a network, remote (mapped), or a USB thumb drive.



4. Continue through the installation wizard. When complete, click **Finish** to close the installer.

Note: If you are unable to install ECHO Personal Capture, your computer may not satisfy all the system requirements identified in the link on page 1 of this tutorial, or you may not have the administrative rights to install software on your computer.

## Personal Capture Settings

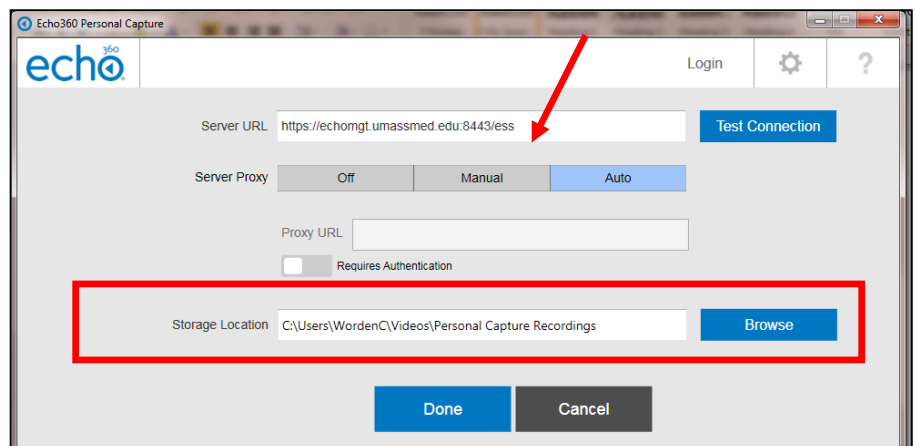
Once ECHO Personal Capture is installed on your machine, open up the application and click on the **Settings** gear icon in the upper right corner of the screen.



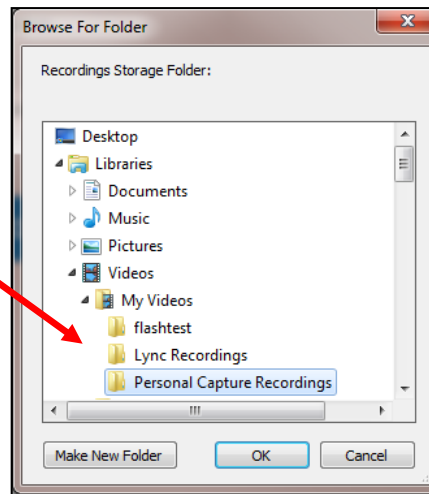
The URL of the UMMS ECHO System server (ESS) is already prepopulated in the Server URL field.

**All recordings are stored locally**, even if you auto-publish to the ECHO Server.

Click **Browse** to choose where you would like the recordings to reside.



You may wish to create a new folder entitled Personal Capture Recordings.



Recordings can be very large files, so once you have confirmed the recording has successfully published to the ECHO server, you may wish to delete the file from your local drive. This will not delete the recording from the ESS, only your local drive.

Be sure to click on **Done** once you have chosen a local destination for your recordings.

You are now ready to start **Using ECHO Personal Capture for Windows.**