

Installing ECHO Personal Capture (EPAC) for Mac

This tutorial will walk you through the installation of ECHO Personal Capture on your computer and selecting the location on your local drive for your recordings.

The first step is to check that your system meets the minimum requirements to run this application. Click to view the [Recommended Hardware and Software for Mac](#).

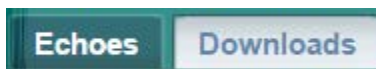
Installation of Software

Note: You must be an administrator on your computer in order for you to install ECHO Personal Capture.

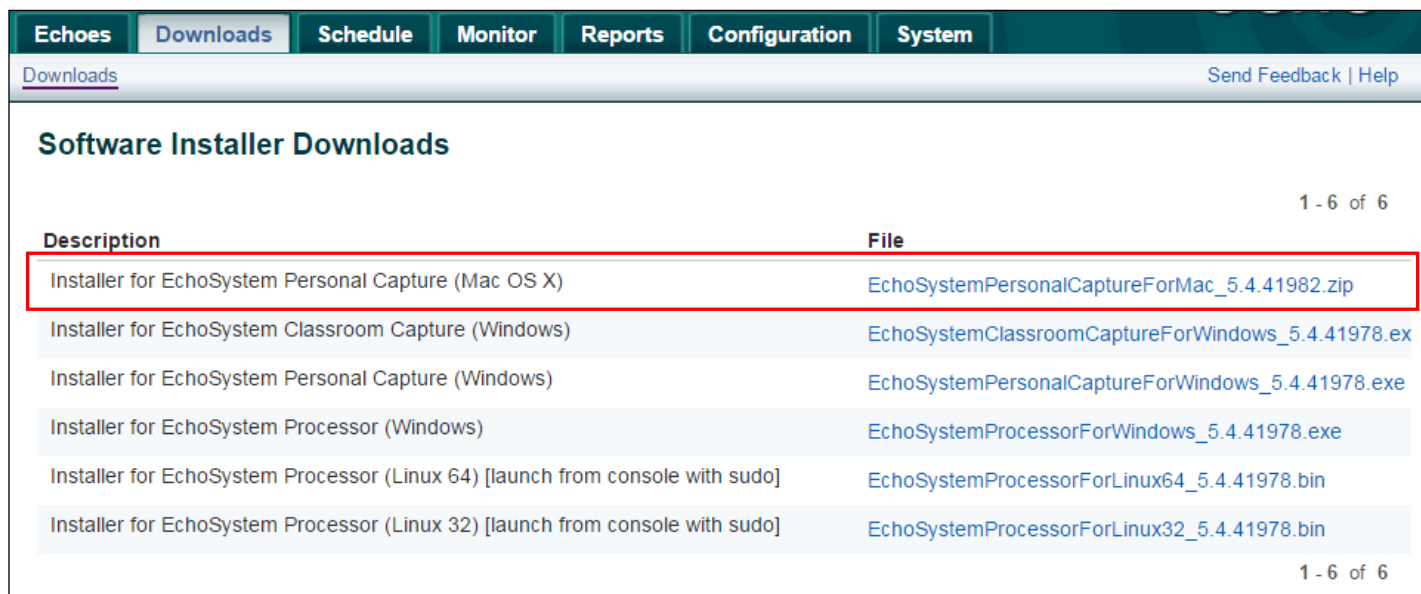
To install Personal Capture software on your system, first login to the ECHO Server System (ESS). The login page is <https://echo.umassmed.edu:8443/ess/login.jsp>.

Your credentials are your UMass Medical School account.

Once logged in, click on the **Downloads tab** at the top of the screen:



Click on the link to the **Installer for EchoSystem Personal Capture (Mac OS X)**.



Description	File
Installer for EchoSystem Personal Capture (Mac OS X)	EchoSystemPersonalCaptureForMac_5.4.41982.zip
Installer for EchoSystem Classroom Capture (Windows)	EchoSystemClassroomCaptureForWindows_5.4.41978.exe
Installer for EchoSystem Personal Capture (Windows)	EchoSystemPersonalCaptureForWindows_5.4.41978.exe
Installer for EchoSystem Processor (Windows)	EchoSystemProcessorForWindows_5.4.41978.exe
Installer for EchoSystem Processor (Linux 64) [launch from console with sudo]	EchoSystemProcessorForLinux64_5.4.41978.bin
Installer for EchoSystem Processor (Linux 32) [launch from console with sudo]	EchoSystemProcessorForLinux32_5.4.41978.bin

Depending on the browser you are using and the browser settings you have configured, clicking the software download link in the ESS results in either a .zip file or a .app file being saved to your Downloads folder. If it is a zip file, clicking the zip file should extract the .app file contained within it. Use the steps below to install Personal Capture from the .app file.

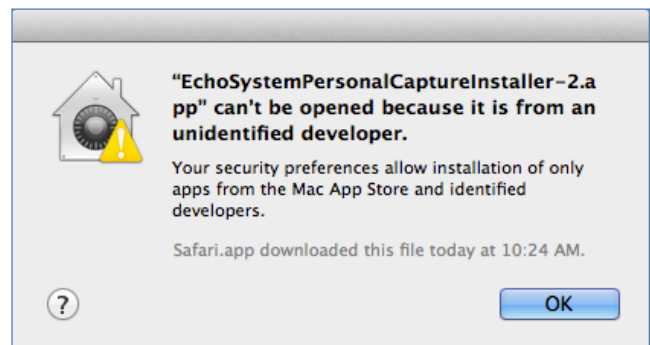
Note: The Personal Capture installation and data directories must be on the local drive; they cannot be located on a network, remote (mapped), or a USB thumb drive.

i Important: Unzipping Personal Capture for Mac zip file

If an archive utility other than Apple's official Archive Utility is used to extract/unzip the Personal Capture for Mac zip file, a silent error may occur when trying to launch the application. This is documented on Apple's support forums here: <https://discussions.apple.com/thread/6141474?tstart=0>

It is recommended you use Apple's official Archive Utility, built into OS X, to unzip the Personal Capture for Mac zip file.

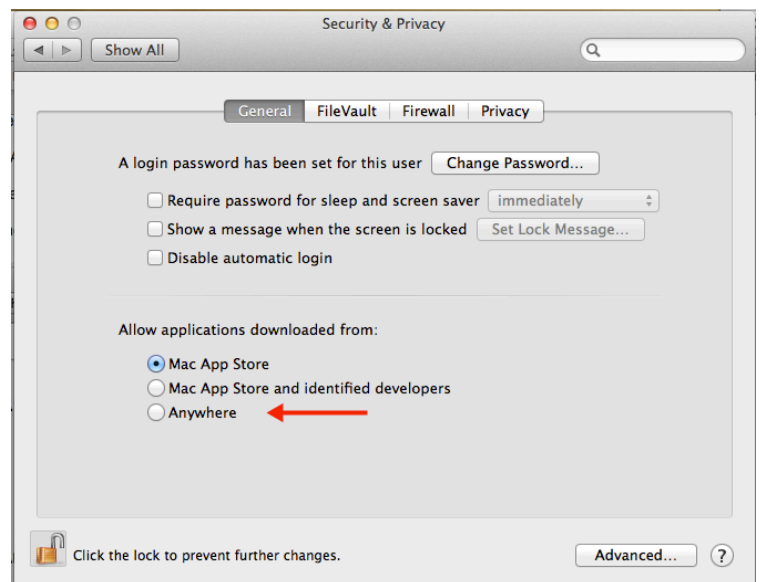
1. Find and click on the downloaded or extracted .app file for the Personal Capture installer. In most cases it will be located in your Downloads folder.
2. Depending on your security settings, you may receive a dialog box indicating that the installer cannot be opened. If you are running OS X 10.8 or later, the default security "curtain" is to only allow launch of applications downloaded from the Mac App store.



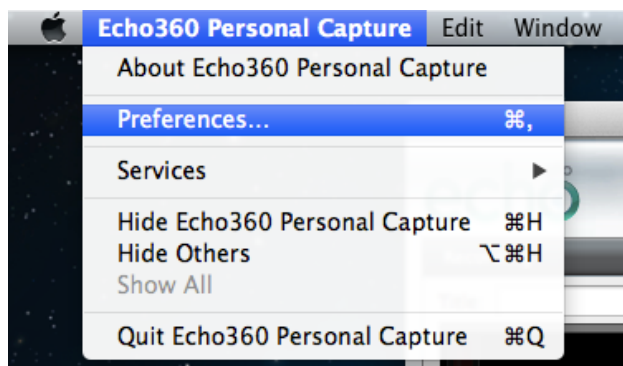
In this case, you have two choices:

- a. Locate and *right-click* or *command+click* the .app file and select **Open** from the pop-up menu. This should provide you with a similar warning box, but the option to Open the installer file. **This method is recommended.**
- b. Navigate to **System Settings > Security & Privacy** and change the settings to allow applications downloaded from "Anywhere" to be launched. If you choose this option, you will want to return your security settings to their previous configuration after installation.

Once the installer is launched, follow the Setup Wizard prompts to complete installation.

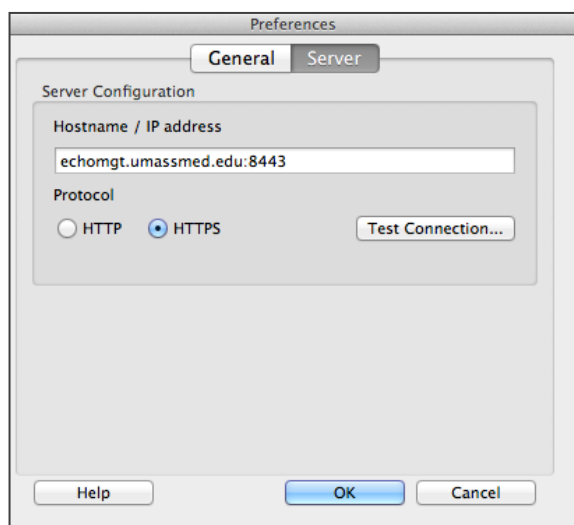


Configuring Personal Capture Settings



Once ECHO Personal Capture is installed on your machine, open the application by double-clicking the icon on your desktop or in your system tray.

Then click on **Echo360 Personal Capture** in the top left menu bar, and select **Preferences** from the drop-down menu.



1. In the **General** tab, enter your **Default Presenter Name**, as well as set the storage location for your personal capture recordings.
2. Click **Change...** to choose where you would like the recordings to reside. You may wish to create a new folder entitled Personal Capture Recordings to keep them all in one location.

3. You can also choose to show the **welcome screen** at each Personal Capture startup.

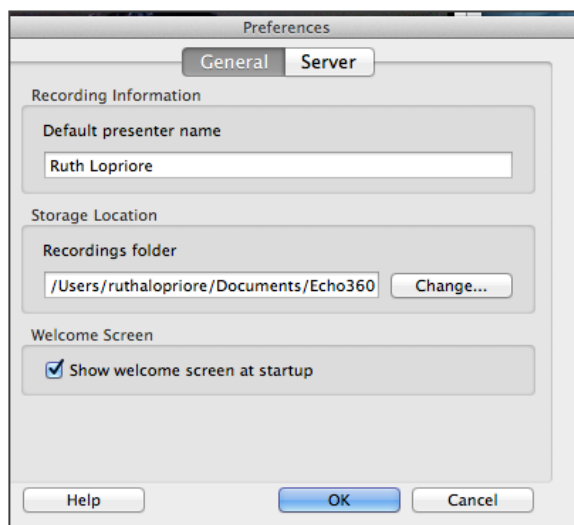
4. Click **OK** to save your General settings.

5. In the **Server** tab, the **Hostname/IP address** is auto-filled with the correct address for the UMMS server.

6. The **HTTPS** radio button is auto-checked.

7. Click the **Test Connection** button to ensure the server settings are correct. If you see a red "x" contact the Help Desk for assistance.

8. Click **OK** to save these Server settings.



You are now ready to start **Using ECHO Personal Capture for Mac**.