

## Adobe Presenter Quick Reference

### Enabling the Presenter Add-in

If you have purchased an Adobe Presenter license and have had the application installed, you should see the presenter tab appear on your PowerPoint toolbar:



If the Presenter tab is not present, it is probably because the add-in has been disabled. The following outlines the steps to enabling the Presenter add in

1. Open your PowerPoint and click on the Office button:



2. Select **PowerPoint options** which appears at the bottom of the drop down menu



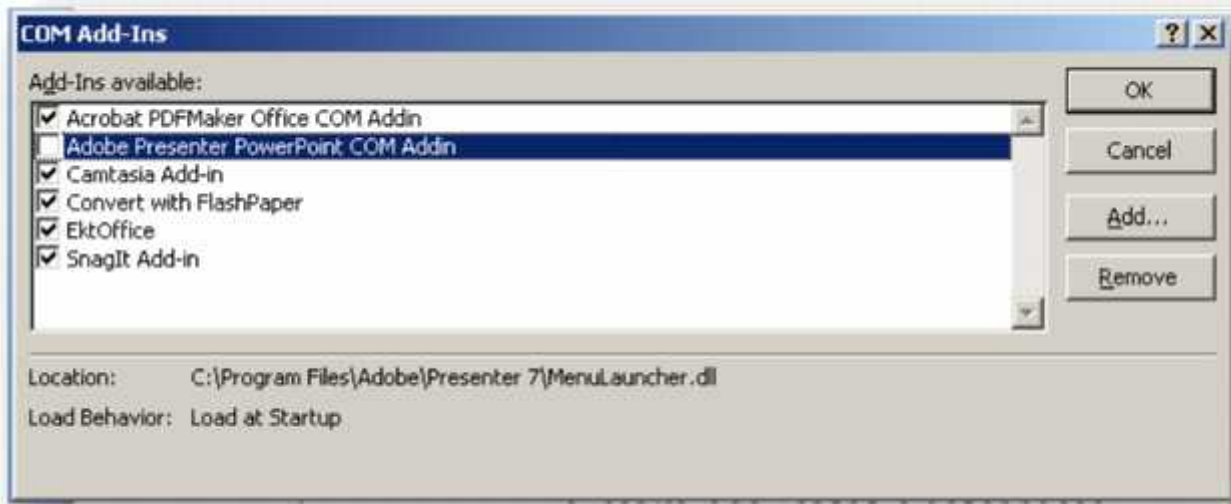
3. Click on Add-Ins:



4. In the drop-down box at the bottom select **Manage COM Add-ins** and click on **Go**:



5. Select the unchecked **Adobe Presenter PowerPoint COM Addin** in the list and click on **Remove**



(Note: If you do not see this add-in listed, proceed to Step 6):

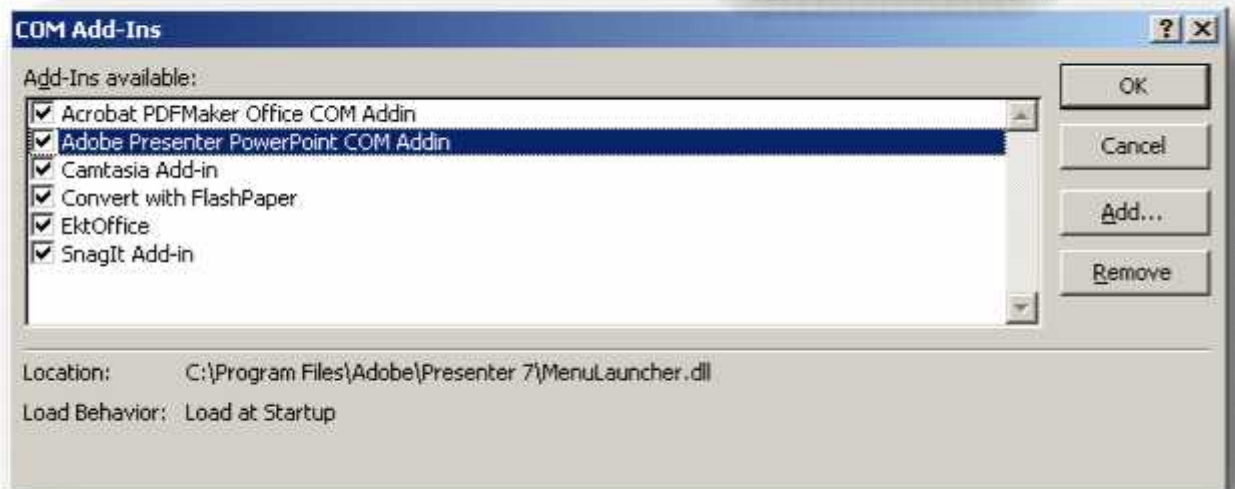
6. Click on **Add**:



7. Navigate to C:\Program Files\Adobe\Presenter 7\:



8. Find the MenuLauncher.dll file and double click on it:



9. Make sure the **Adobe Presenter PowerPoint COM Addin box** is checked and click on **OK**:

10. Close your PowerPoint and reopen it; you should now see the Presenter tab.