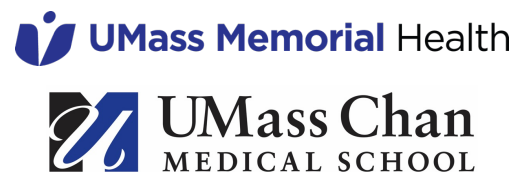


# Family Medicine and Community Health 2024 Retreat

*Celebrating Family Medicine!*

M. Diane McKee, MD, MS and Hugh Silk, MD, MPH

Thursday, May 16, 2024



Celebrating 50 Years of  
**UMass Family Medicine**

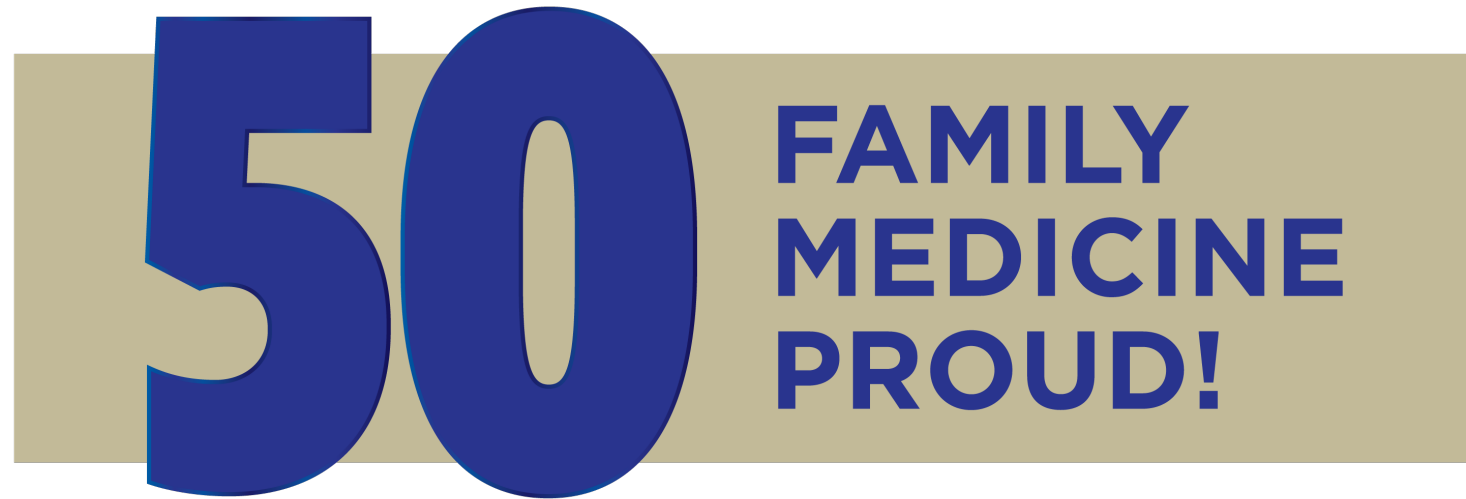
**50** FAMILY  
MEDICINE  
PROUD!

Educating the next generation of  
clinicians to serve all communities.

# Retreat Goals:

- Celebrating Family Medicine and preparing for our 50<sup>th</sup> Anniversary (and the BH Fellowship's 25<sup>th</sup>)
- Providing Faculty Development
- Promoting a Culture of Faculty Advancement and Joy

# Celebrating 50 Years of **UMass Family Medicine**



**Educating the next generation of  
clinicians to serve all communities.**

 **UMass Memorial Health**

 **UMass Chan  
MEDICAL SCHOOL**

Celebrating 50 Years of  
**UMass Family Medicine**



Educating the next generation of  
clinicians to serve all communities.

# A Year of Celebration

- Events
  - Barre Health Center celebration Aug. 24<sup>th</sup>
  - Family Fun
    - Apple picking and fun at Hugh Silk's – date TBD in fall
  - Annual Awards Ceremony (date TBD in fall)
  - Spring 2025 CME and celebration (encouraging alumni participation)
  - Others in development
- Featuring alumni and prior faculty
  - Monthly Grand Rounds
  - Visiting Professors/Named Lectures
- Special e-newsletter for alums – news and updates
- Connecting with philanthropy and communications to elevate our profile

# How can you help celebrate?

- Join our 50<sup>th</sup> Anniversary Committee!
  - (Thanks Dan L, Warren F, Lee M, Mike E, Steve E, Beth M, Dan M (so far!))
  - Contact [Linda.Cragin@umassmed.edu](mailto:Linda.Cragin@umassmed.edu) if you want to participate.
- Share stories that we can highlight and share with Development and Communication offices at UMass Chan and UMMHC and our own communication
- Send quotes that may appear as a UMMHC screen saver to [Linda.Cragin@umassmed.edu](mailto:Linda.Cragin@umassmed.edu)

# Student Match 2024

- 23 students matched to Family Medicine
- 95% matched in top 3 spots, most in top 2
- **14%** of the graduating class
  - Typical UMass match is 8-9%
  - More challenging with an increasing class size (this year, 164!!!)
- **National average per AAMC is 12.7%**
  - BU 9.3%
  - Tufts 6.5%
  - Harvard .006% (1 out of 160)
- 38% (3/8) Rural Health Scholars and 31% (5/16) Urban Health Scholars
- Many staying local!

UMass Hahnemann (2), Greater Lawrence FHC (2), Boston Univ/BMC (2), Baystate/Greenfield (1), Cambridge (1)



# Residency graduates\* to date:

- WFMR: 578
  - Worcester City: 84
  - Family Health Center of Worcester: 101
  - Barre FHC: 194
  - Hahnemann: 195
- FFMR: 206

***TOTAL: 780***

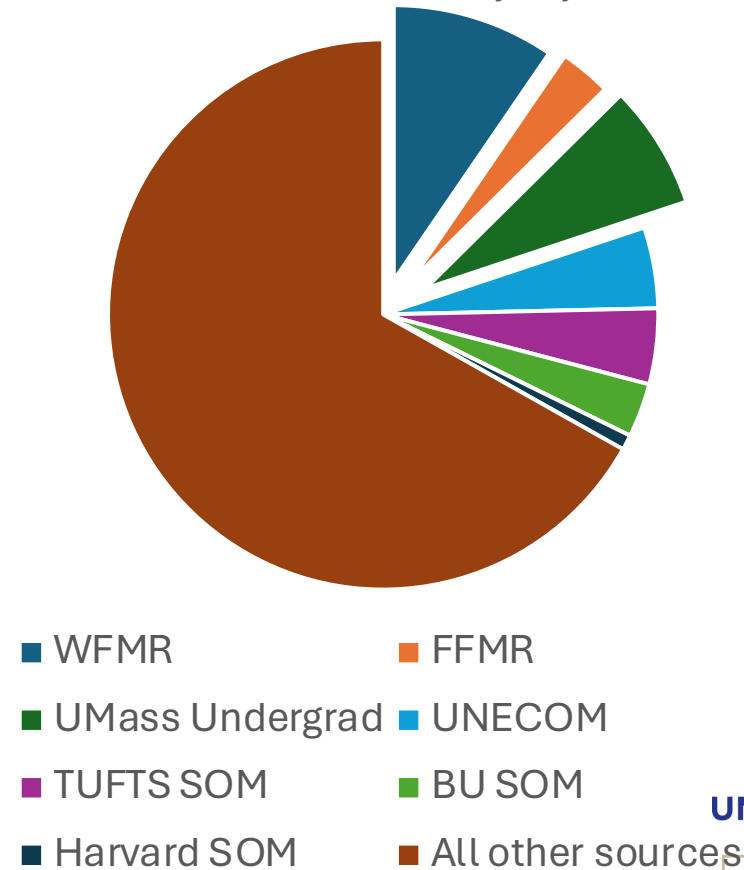
# FMCH Impact in MA\*

- 2,585 active, licensed Family Medicine physicians\*\* in MA

- **325 are our residencies' graduates**
  - 247 WFMR
  - 78 FFMR
  - Of these, 81 were UMass SOM graduates
- **270 are graduates from UMass SOM**  
(including 81 in our residencies)
- **Total impact:**
  - **514 / 2585 = 20%**

- UNECOM: 123 students
- Tufts SOM: 115
- BU SOM: 82
- Harvard SOM: 23

Source of Active/Licensed Family Physicians in MA



\* As of September 2023

\*\*some of our alums are identified in other specialties- sports medicine, geriatrics, preventive medicine, palliative care, etc. These are not counted.



# Leadership Year in Review

- Welcome new department leaders
  - New VC for Education in August - Jeanne Cawse-Lucas
  - New VC for Research - Jennifer Carroll
- Interim Leadership
  - Vice Chairs of Education**
    - Mary Lindholm
    - Frank Domino
  - Director of Hospital Medicine**
    - Jason Numbers
- Perinatal Services leadership transition
  - Co-Directors Kristina Gracey and Claudia Pierre (July 1)
- APP leadership – Jillian Joseph

# Education Year in Review

## UME

- Best in state student match results
- Clerkship transition to Vista
- Numerous faculty in Vista leadership roles

## GME

- Excellent matches for WFMR and FFMR
  - Most diverse Fitchburg class ever
- Temp expansion granted for WFMR
- Permanent expansion requested
- Adoption of QGenda
- Redesign effective July 2024
  - Requires fewer residents for inpatient rotations
  - Equity across health centers
  - Jeopardy rotation

# Clinical Highlights

- Comprehensive primary care growth:
  - Added 11 FTEs (more to come).
- Integrated behavioral health visits:
  - **8822** BH visits in FMCH between 3/13/23 – 3/13/2024
  - **1/3** of the total BH visits of the entire system
  - **5290** Medicare/Medicaid; **3532** privately insured
  - Down 1 FTE BH clinician for HFHC – will start this summer
  - Clinical visits by BH Fellows and other learners are **NOT** included in this data
- Deliveries: 461 babies in FY23 ; 243 to date in FY24 (5% increase)
- Continued growth of Primary Care Sports & Exercise Medicine
  - 32.1% Growth this year, 91% growth over 2 years.

2024 vs. 2023	Growth through March	Increase in Visits
Barre	8%	1035
Hahnemann	6%	819
Benedict	8%	627
Fitchburg	10%	797
<b>Total Increased Primary Care Visits</b>		<b>3278</b>

# Community Health Year in Review

- Health Centers/Department
  - Community Connections – community resources pre-Grand Rounds
  - Listening Sessions in Health Centers around mental health resources
  - Community Baby Shower – great turn out!
- Residency
  - Expanded community health experiences in curriculum
- Medical School
  - Huppert Scholars x 3; faculty = Candib, Haley, Valdman; 3 presentations
  - Population & Community Health Clerkship – evolution planning going well
  - Pathways – Structural Inequity, Advocacy & Justice – and – Global and Community with many FMCH faculty participating
  - Societal Forces inc. a Community Health Fair – S. Hogan

# Faculty Development

## Teaching of Tomorrow

- now led by Philip Day
- Increasing registration
- FMCH participation (Nov. 2023- March 2024):
  - Fellows: 6
  - APPs: 4
  - Faculty: 3
- New location in AY24-25!

## Supported numerous faculty scholars

### JFDP Scholars

- Erin Cathcart
- Rebecca Gwaltney

### PLDP

- Lisa Gussak
- Sandra Augusta

### Bloomberg Fellow

- Amber Cahill

# Research Year in Review

- Additional tenure track faculty
  - Jennifer Carroll, MD, MPH
- Substantial increase in submitted grants
  - Blue Ridge ranking #30 (from #32)
- Enhanced capacity for practice-based research
  - **UMass Ambulatory Research Consortium (ARC)**
    - Growing portfolio
  - Pilots– 1 yr, 25k awards
    - 5 in 2023
    - 3 in 2024

# Diversity, Equity and Inclusion Year in Review

*Responses to Systemic Oppression and Anti-racism Committee (SOAR)  
LEED Survey and FMCH Climate Survey:*

- Jeffery Ring, PhD: Enlightened Leadership and Anti-racism Diversity consultation.
- Support system in alignment with UMass Chan DEI reporting structure
  - Identify and recognize faculty who provide learner support
  - Formalize faculty ombudspersons
  - Awaiting Seed Grant to stipend faculty ombudsperson?
- Tier 1 Restorative Justice Session at a residency health center site
- Department faculty are part of anti-racism efforts in different spaces
  - Maternity Center Anti-racism taskforce
  - Integrating DEI in Grand Rounds and DEI Grand Rounds
  - Presentations: Mass AFP, UMass

# Strategic Investments Year in Review

- Epic Mastery Taskforce continuation
- DAX scribing
- Point of Care Ultrasound
  - Handheld units, new devices
  - Focus on curriculum and clinical policies
- Diversity consultant- fall 2024
- Numerous faculty scholars supported

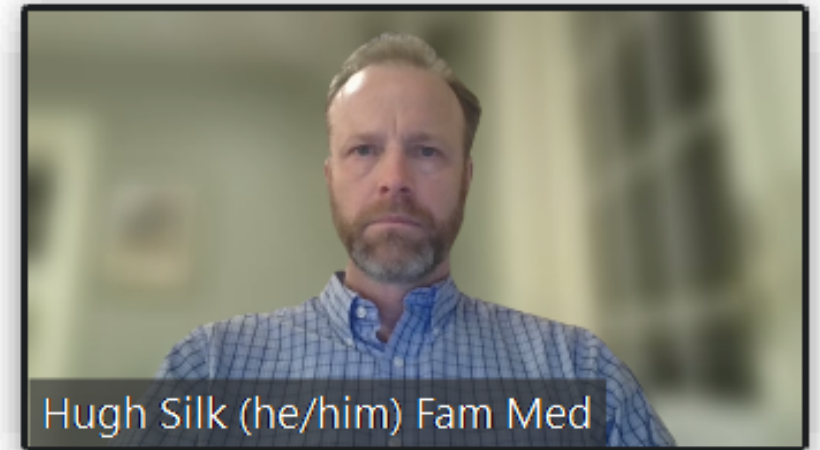


# Family Medicine Visibility – Be Proud!

- How do you introduce yourself?

<https://www.youtube.com/watch?v=5X9JzTAfWcg&list=PLKFj0cNaryso2bxr7I1Cl40SMiAkiGvBO&index=5>

# Edit your zoom background? ID?



 UMass Memorial Health

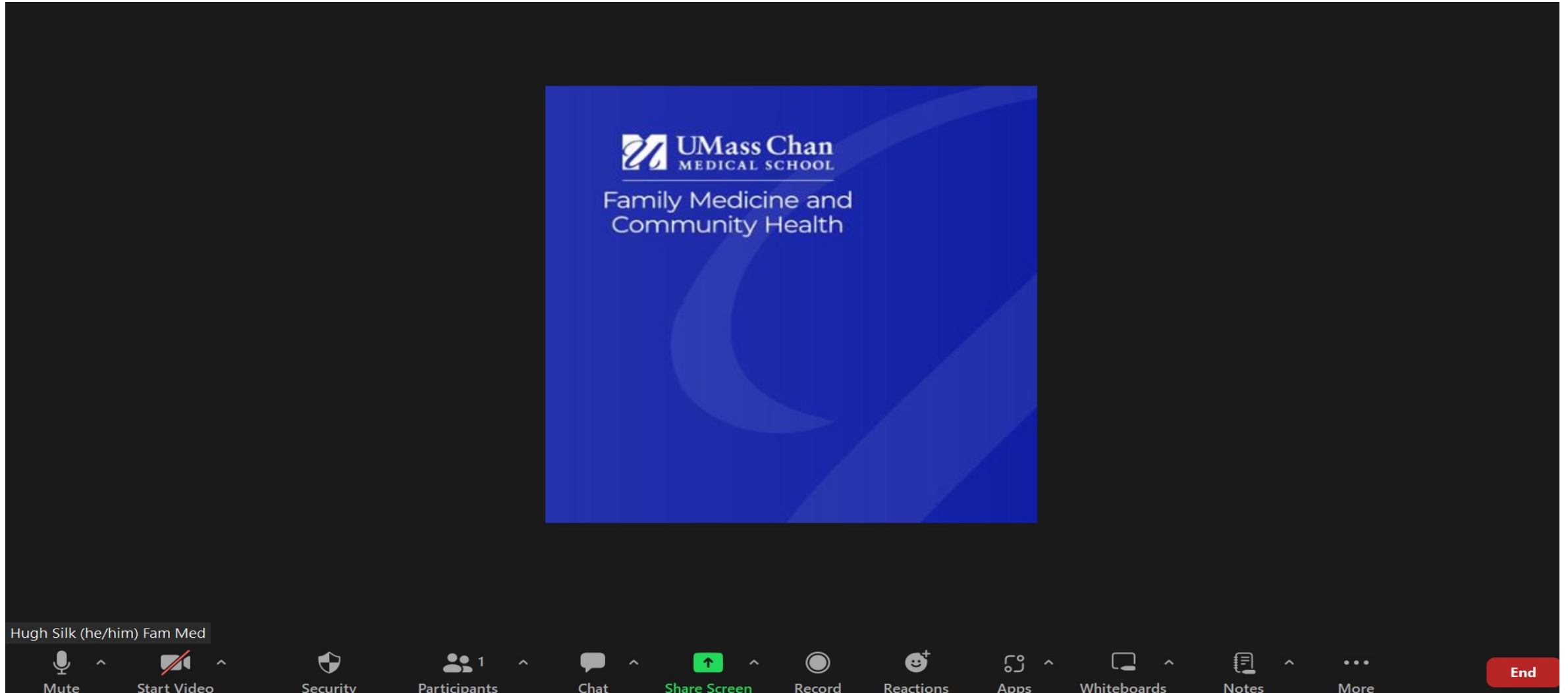
 UMass Chan  
MEDICAL SCHOOL

Celebrating 50 Years of  
**UMass Family Medicine**

**50** FAMILY  
MEDICINE  
PROUD!

Educating the next generation of  
clinicians to serve all communities.

# Update Your Screen When Video is off

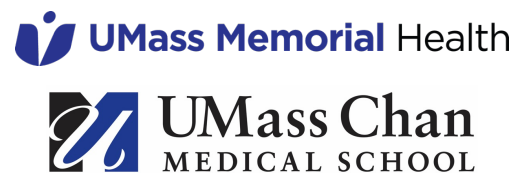


The image shows a Zoom meeting interface. The main content area displays a blue slide with the UMass Chan Medical School logo and the text "Family Medicine and Community Health". The bottom toolbar contains various controls: Mute, Start Video, Security, Participants (1), Chat, Share Screen (highlighted in green), Record, Reactions, Apps, Whiteboards, Notes, More, and an End button.

Hugh Silk (he/him) Fam Med

Mute Start Video Security Participants 1 Chat **Share Screen** Record Reactions Apps Whiteboards Notes More **End**

# Please use our NEW powerpoint template for all presentations

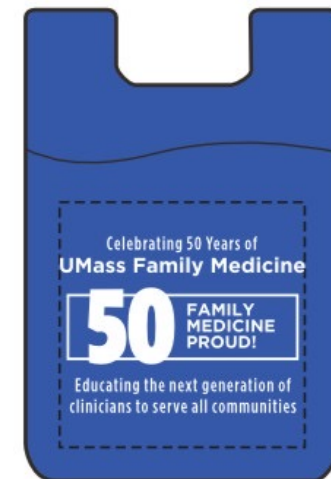
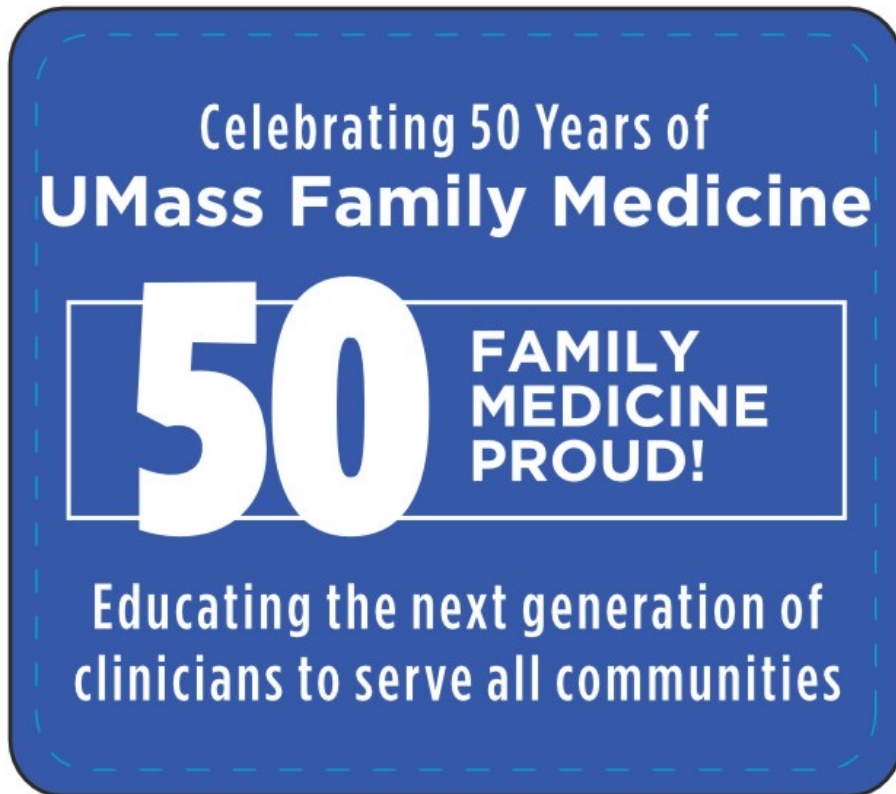


Celebrating 50 Years of  
**UMass Family Medicine**

**50** FAMILY  
MEDICINE  
PROUD!

Educating the next generation of  
clinicians to serve all communities.

# Don Your Swag - Family Medicine Proud!

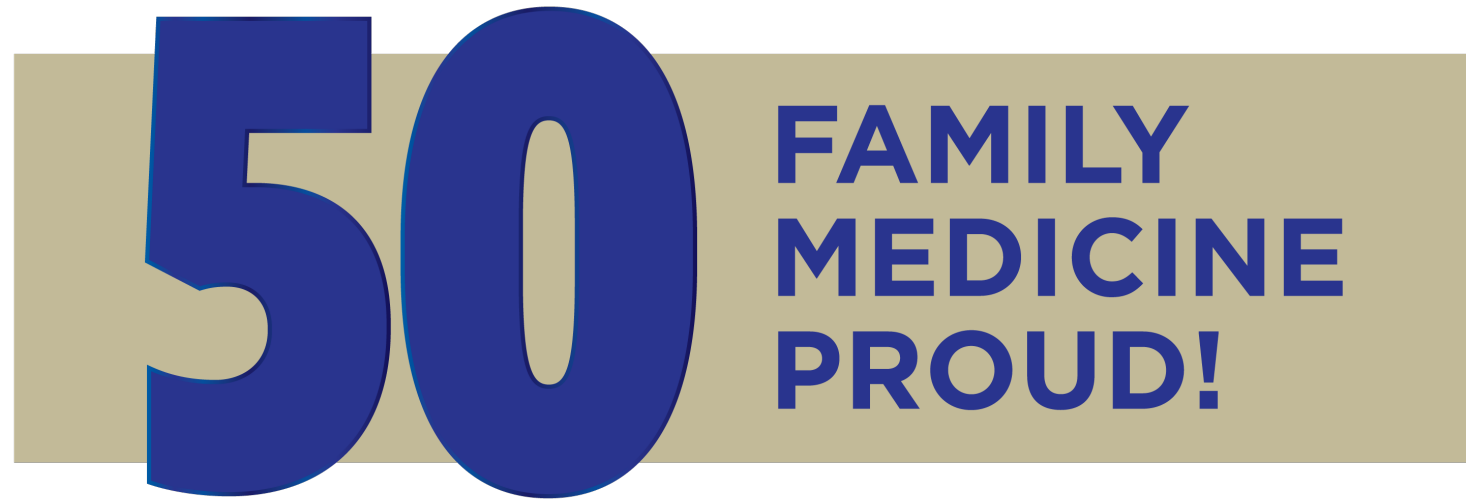


celebrating 50 Years of  
**UMass Family Medicine**



Educating the next generation of  
clinicians to serve all communities.

# Celebrating 50 Years of **UMass Family Medicine**



**Educating the next generation of  
clinicians to serve all communities.**

 **UMass Memorial Health**

 **UMass Chan  
MEDICAL SCHOOL**

Celebrating 50 Years of  
**UMass Family Medicine**



Educating the next generation of  
clinicians to serve all communities.