

UMass Chan Lahey Regional Campus Medical School

Executive Council Update

Anne C Mosenthal, MD, FACS, MAMSE



UMass Chan
MEDICAL SCHOOL

Beth Israel Lahey Health



Lahey Hospital &
Medical Center

May 16, 2024.

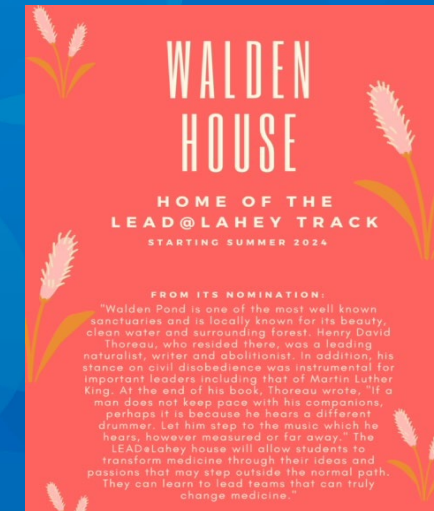
COUNTDOWN....

88 DAYS....

FIRST CLASS OF UMASS CHAN-LAHEY STUDENTS ARRIVE



Beth Israel Lahey Health 
Lahey Hospital & Medical Center



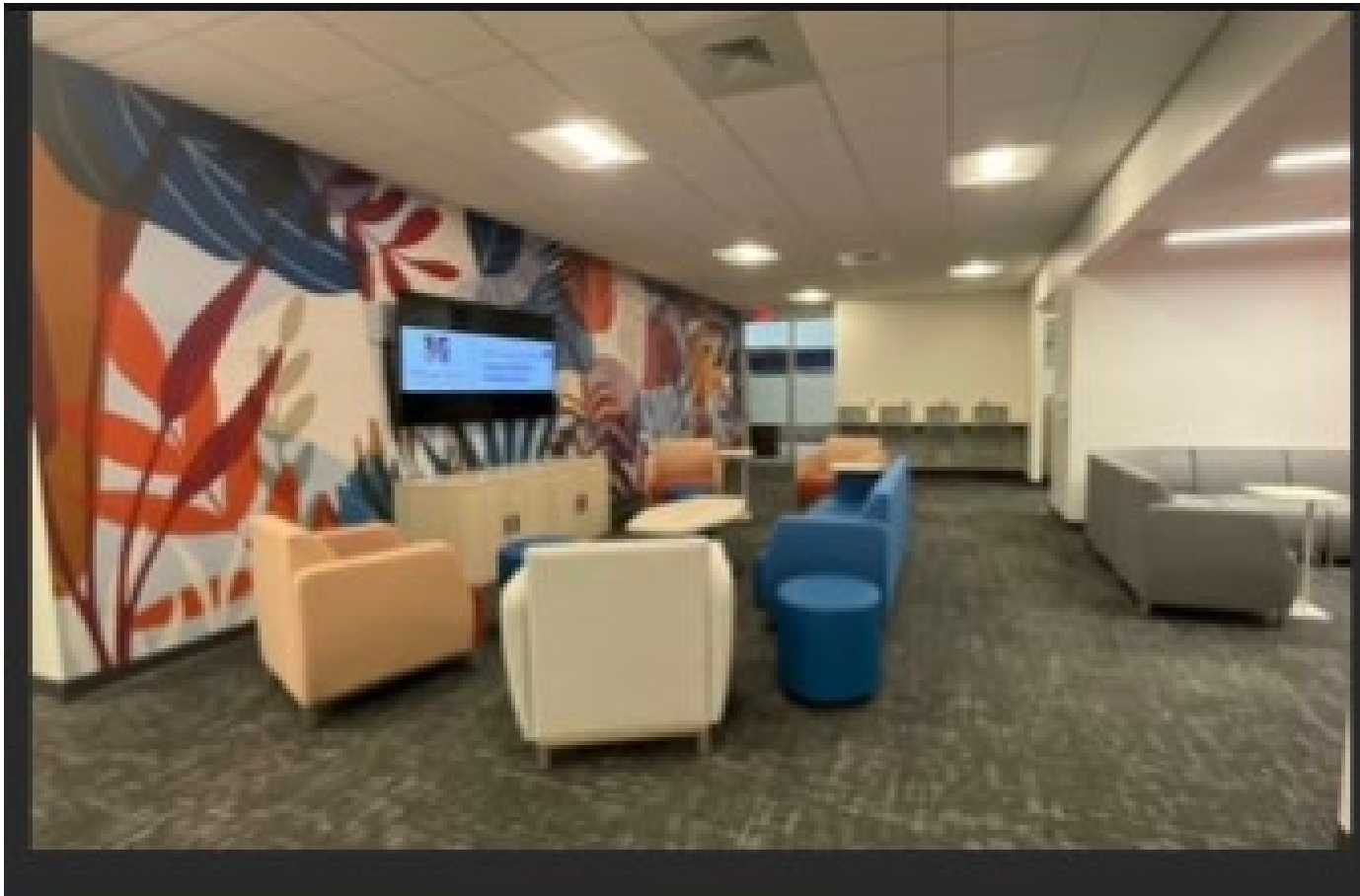
Ribbon Cutting April 30th, 2024



UMass Chan-Lahey regional medical school campus prepared to welcome inaugural class

UMass Chan Medical School and Lahey Hospital & Medical Center, part of Beth Israel Lahey Health, celebrated the completion of the new UMass Chan-Lahey regional medical school campus with a [ribbon-cutting ceremony](#) on April 30. UMass Chan-Lahey will officially open its doors in August to approximately 25 medical school students accepted into the LEAD@Lahey track.

OUR LEARNING COMMUNITY



WALDEN HOUSE

HOME OF THE
LEAD@LAHEY TRACK

STARTING SUMMER 2024

FROM ITS NOMINATION:

"Walden Pond is one of the most well known sanctuaries and is locally known for its beauty, clean water and surrounding forest. Henry David Thoreau, who resided there, was a leading naturalist, writer and abolitionist. In addition, his stance on civil disobedience was instrumental for important leaders including that of Martin Luther King. At the end of his book, Thoreau wrote, "If a man does not keep pace with his companions, perhaps it is because he hears a different drummer. Let him step to the music which he hears, however measured or far away." The LEAD@Lahey house will allow students to transform medicine through their ideas and passions that may step outside the normal path. They can learn to lead teams that can truly change medicine."

Visit to Lahey Campus....

Lahey Greets Accepted Students

There was so much energy in the air as about 40 accepted students visited our Lahey campus earlier this month. The students were greeted by **Dr. Susan Moffatt-Bruce**, **Dr. Wendy Barr**, and **Dr. David Neumeyer**, and other UMass Chan and Lahey leaders. Students toured the hospital with Lahey residents and fellows who are UMass alumni, and they had lunch with faculty of the LEAD@Lahey pathway. We also provided tours of the new campus space and students took part in a leadership workshop on finding your special purpose.

The visits went well (despite a snowstorm!) and it was great to see so much engagement and enthusiasm. An extra thank you to **Billy Capel** and **Tom Westerberg** for driving to and from Worcester to pick up and drop off the students and their families. I appreciate everyone's help to make the events a success. We look forward to having many of these students choose Lahey for their medical training.



Inaugural class.. To date

Umass Chan Lahey Admissions Inaugural Class:

200 applications

120 interviews

62 acceptances + wait list

40 attended on campus visit and LEAD workshop!!

16 *Committed* to Enroll

18 *Planning* to Enroll

Faculty and Deans



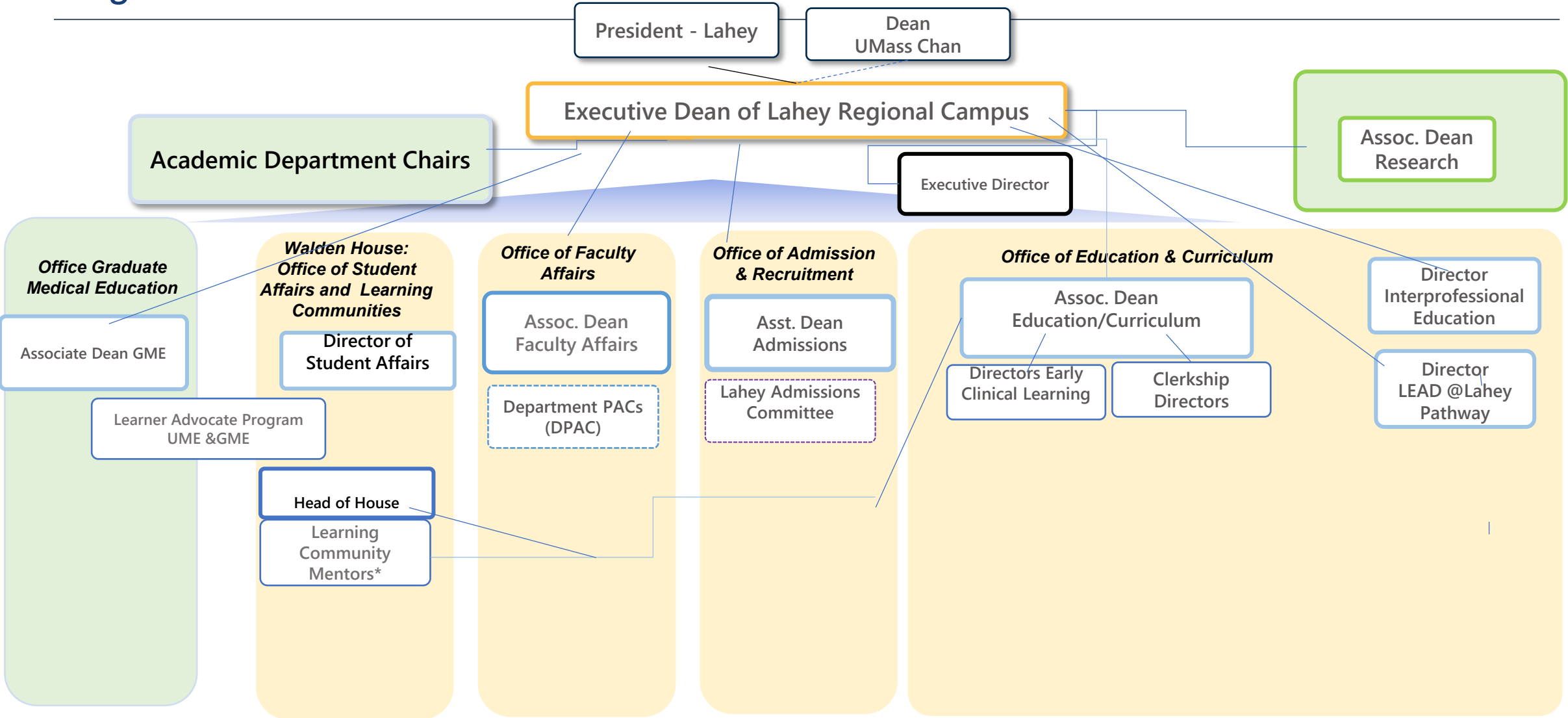
Beth Israel Lahey Health 
Lahey Hospital & Medical Center

UMass Chan-Lahey Medical School Regional Campus

Org Chart



Beth Israel Lahey Health



*see ramp up schedule/budget detail

Learning Community Mentors – WALDEN HOUSE

Beth Lovell, MD - Walden House Mentor



Beth Starr Lovell was born and raised in Worcester, MA. She earned her Bachelor of Science in Language and Literature from Brandeis University and received her MD from the University of Rochester School of Medicine and Dentistry. She completed her residency in Emergency Medicine at the University of Rochester and is currently affiliated with UMDNJ at the time of her residency at Rowan University.

Alan Lim, MD - Walden House Mentor



Dr. Alan Lim grew up in Philadelphia, PA, and received his undergraduate degree from Franklin Marshall College. He earned his medical degree from the University of Pittsburgh and completed residencies in otolaryngology at the University of Virginia, Portsmouth, Virginia, and plastic surgery at Harvard Medical School. He completed a fellowship in craniomaxillofacial and pediatric plastic surgery in Los Angeles.

Brian Rosenberg, MD - Walden House Mentor



Brian grew up on Long Island, NY. He attended The Johns Hopkins University and graduated with a BA in neuroscience, then completed a ScM in Biomedical Science at The Johns Hopkins School of Public Health. He completed medical school at The Johns Hopkins University in Baltimore, Maryland. He and his wife Couples Matched at the University of Rochester (Liz in Orthopaedic Surgery). He completed his Chief Residency in General Internal Medicine. They moved to the Boston area in 2014 and have been practicing since.

Fina Barouch, MD - Walden House Mentor



Dr. Fina Barouch grew up in Texas, received a Bachelor of Science in Biology from the University of Texas at Austin, and earned her MD *magna cum laude* from Harvard Medical School. She completed her Internship at Massachusetts General Hospital, she completed her Vitreoretinal Surgical Fellowship at Harvard Medical School in Boston, MA. She also served as a resident in Ophthalmology at Massachusetts Eye & Ear.

Associate Dean Education and Curriculum

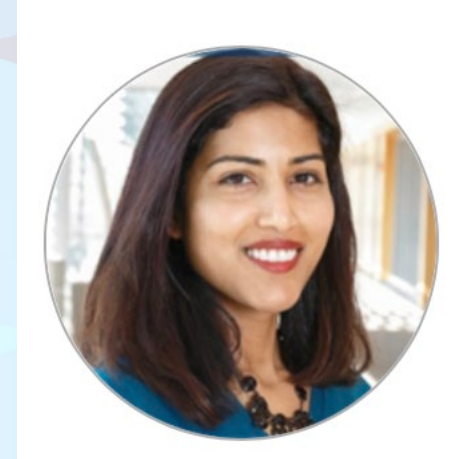
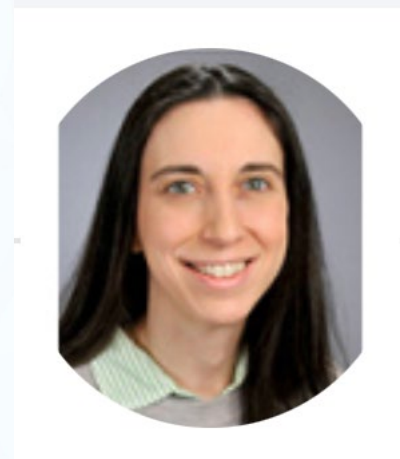
Wendy Barr



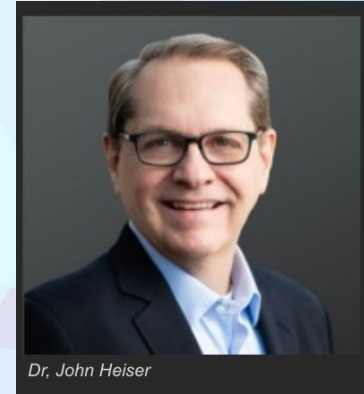
Directors of Early Clinical Learning

Zoe Rosenbaum

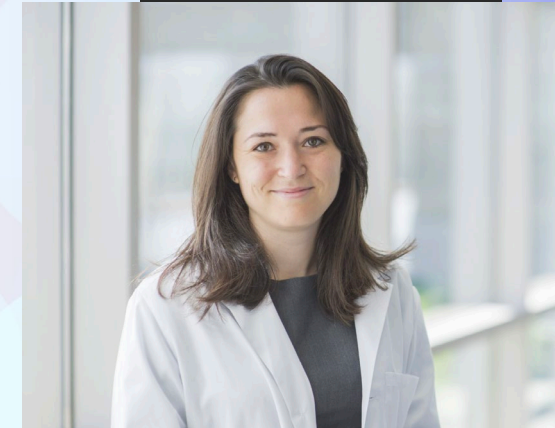
Shwetha Sequeira



Director of LEAD@Lahey Pathway
John Heiser



Director of Interprofessional Education
Lauren Knowles



Director of Student Affairs
Maria DeOliveira



Diversity, Equity, Inclusion, Belonging



Beth Israel Lahey Health 
Lahey Hospital & Medical Center

Lahey EDUCATION GRAND ROUNDS

Attendees Enjoy Education Grand Rounds and DRIVE Presentation

Our inaugural Lahey Education Grand Round Series event last month drew 82 in-person attendees, another 80 joined remotely, and still others have requested the recording. The session was led by **Dr. Yasmin Carter**, Associate Professor of Translational Anatomy in the UMass Chan Department of Radiology and Director of DRIVE, the Diversity, Representation, and Inclusion for Value in Education Initiative.



Left to right: Omar Taweh, 4th year UMass medical student, Anne Mosenthal, Melissa Fischer, MD Assistant Vice Provost for Interprofessional and Instructional Innovation, Dr. Carter, Julia Benedetti, MD.



DRIVE

Diversity, Representation and Inclusion for Value in Education



My intent is to promote inclusive learning while avoiding bias.

If you identify opportunities for addressing bias or improving representation in the course content or instructional delivery, I encourage you to share them with either:

- Anne Mosenthal, anne.c.mosenthal@lahey.org
- or
- Contact the DRIVE Initiative at DRIVE@umassmed.edu or scan the QR code to send feedback **confidentially** to DRIVE



Research



Beth Israel Lahey Health 
Lahey Hospital & Medical Center

UMass Chan to create joint research hub with Lahey Hospital

[Office of Communications](#) | [UMass Chan Home Page](#) | [News Home](#) | [Archives](#)



[CONTACT US](#)

[FOR MEDIA](#)

[THE CONVERSATION](#)

[VIDEO](#)

[PODCAST](#)

[UMass Chan News](#) > [UMass Chan and Lahey partner on new clinical ...](#)

Share this story



UMass Chan and Lahey partner on new clinical and quantitative research science hub

By Jim Fessenden | March 21, 2024



The agreement for the research center includes the creation of Lahey's Institute for Healthcare Delivery Science, which will be designed to promote advances in digital medicine, population health, and healthcare delivery. Additionally, the agreement means Lahey is now a full partner in the UMass Center for Clinical and Translational Science, a center working to enhance health and health care delivery via collaborations with the community and various partners.

- **Lahey Institute Health Care Delivery Science**
- **UMass Chan Center for Clinical Translational Science**
- **Lahey full member**
- **Joint Research Informatics Core**

Lahey Institute of Health Care Delivery Science - Pillars

Discover

Health Services
Research
Comparative
Effectiveness Research

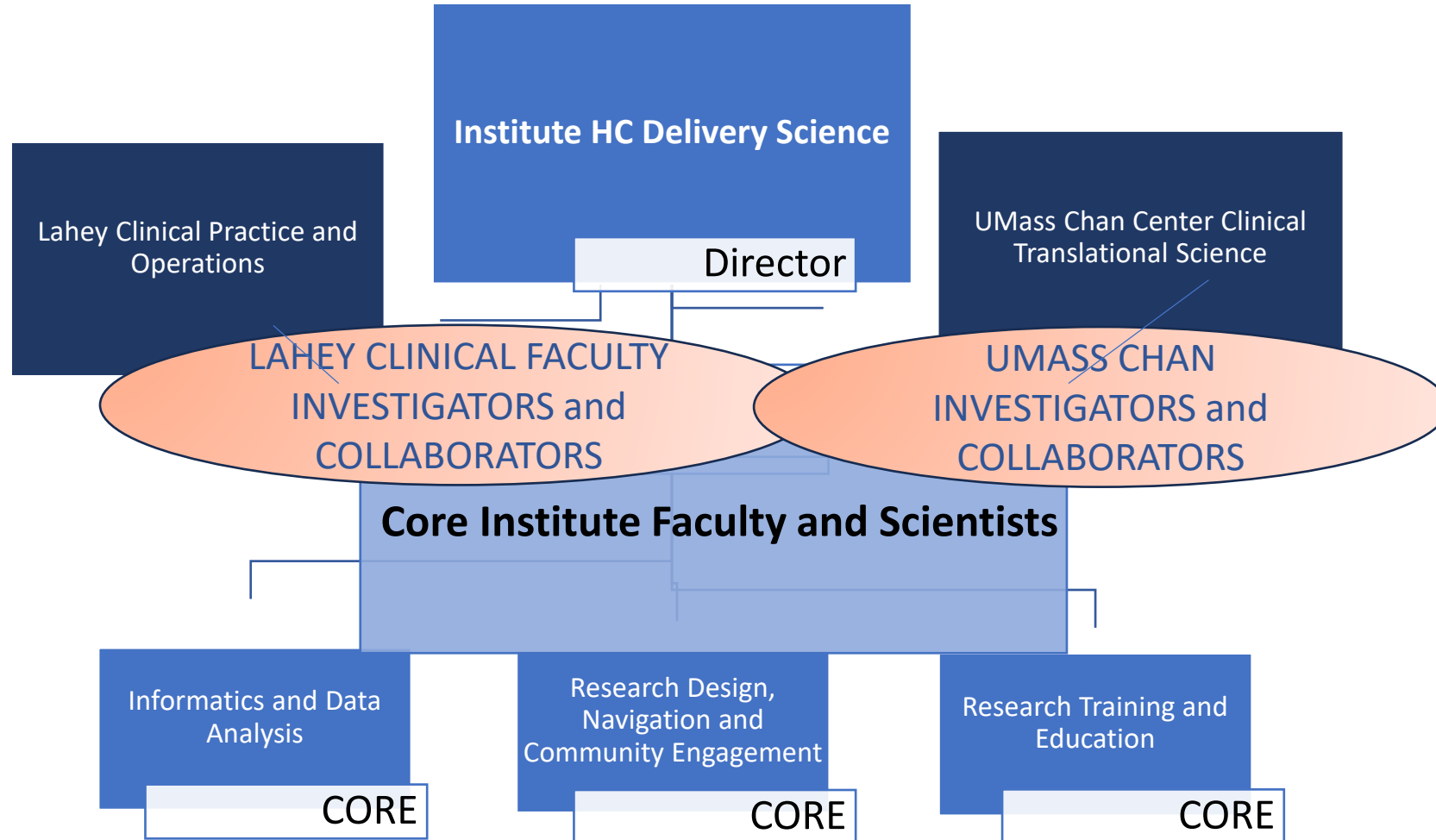
Improve and Innovate

Quality/ Pt Safety
Value Analysis
Pragmatic Clinical Trials

Education

LHS Research Training:
Faculty
GME
Students

Institute Model – Fostering Team Science



National Search:

Inaugural Director Institute of HealthCare Delivery Science

Search Committee – Lahey

- Sarju Ganatra, MD – Co Chair
- Sheri Keitz, MD, PhD – Chair Medicine
- Calvin Brown, MD – Chair Emergency Med
- Fred Resnic, MD, PhD – Chair Cardiology, CERI
- MaryAnne Senna, MD – Translational Research
- Kim Christ, PhD – VP Research Operations
- Sue Stempek, PA, MBA – VP Hospital at Home
- Mika Lindsley, MD – Surgery resident
- Roxanna Scarpino – Director Quality & PI

Search Committee – UMass Chan

- Jerry Gurwitz, MD Chief Geriatric Medicine
- Arlene Ash, PhD, Chief Biostats and Health Service Res.
- Peter Lindenauer, MD, MSc, Chair Healthcare Delivery & Pop Health, Baystate
- Allan Walkey, MD, Chief Health Service Res.
- Kimberly Yonkers, Chair Psychiatry
- Adrian Zai, Chief Research Informatics Officer

Upcoming Events in Burlington:

LEAD@Lahey Faculty Retreat – July 10th

LEAD@Lahey Student Orientation – August 12th and 13th

Opening of Walden House – September 4th

